



**HOTEL GRAND  
CHANCELLOR**  
LAUNCESTON

---

CONVENTION CENTRE

LAUNCESTON • TASMANIA



## Hotel Grand Chancellor · Launceston · Tasmania

---

### General Information and Location

Our 4.5 star hotel, located in the heart of the city, is the ideal venue for all your conference needs, offering the perfect partnership between old fashioned style, hospitality and charm, coupled with the latest in modern conveniences and luxury.

### Accommodation

- 165 rooms and suites including 80 deluxe twin rooms and 7 suites.
- 24 hour room service and reception.
- Business Centre is conveniently located next to Reception.
- The Piano Bar is an ideal place to meet with friends or colleagues.
- The Avenue Restaurant offers a full buffet breakfast, a la carte lunch and dinner.
- The Executive Club Lounge is an ideal corporate retreat for business delegates.
- Broadband internet access is available in all our accommodation and conference rooms.
- Secure parking located next to the hotel.
- Laundry facilities and dry cleaning is also available.
- All rooms are equipped with heating/air conditioning, tea and coffee making facilities, in-house movies and satellite sport (Fox I and Fox II) and news channels.

### Conference Facilities

- The Conference Centre – Launceston's largest flexible function space, ideal for trade exhibitions, gala dinners and plenary sessions.
- The Conference Centre can comfortably accommodate 30 trade booths.
- The Grand Ballroom can be utilised for plenary sessions or three break-out rooms.
- Three break-out rooms all located close to each other and on the same level.
- We have a dedicated catering team to provide your delegates with Tasmanian cuisine and professional service.

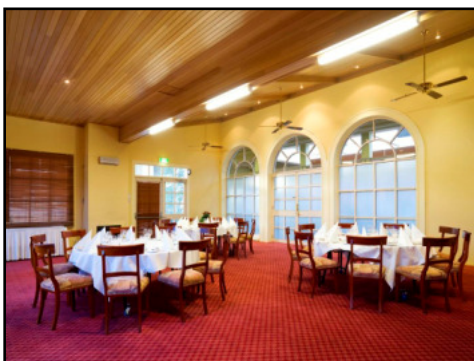
### The Albert Hall

The Albert Hall, managed by the Hotel Grand Chancellor Launceston is a leisurely five minute walk away. Built in 1891, the Albert Hall is one of Launceston's most significant heritage buildings.

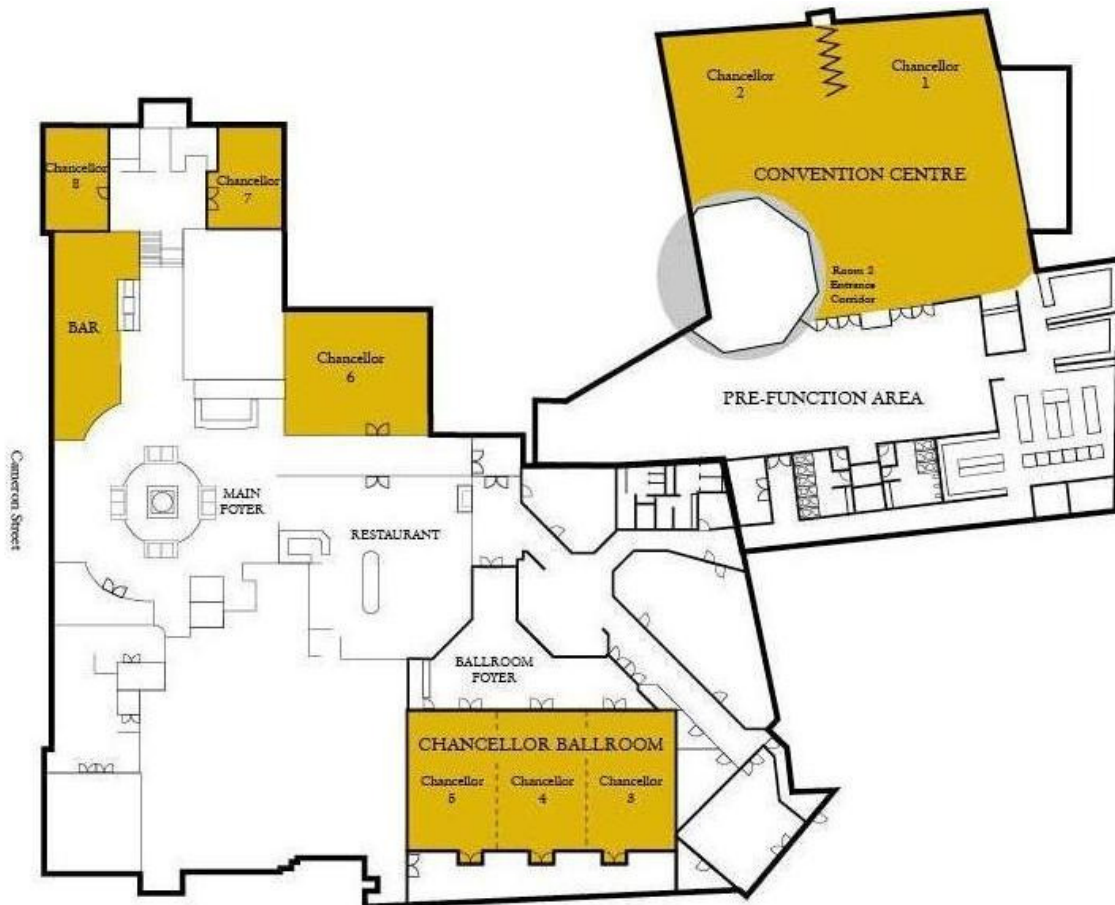
The Hall has a capacity of 1200 theatre style or up to 600 for a banquet dinner. There are also two breakout rooms with a capacity of 90 people each.

### Audio Visual Services/Technical Support

Staging Connections is our inhouse technical supplier, providing state of the art audio visual equipment and support to deliver a highly professional function, conference or event.



## Hotel Grand Chancellor · Launceston · Tasmania Floorplan



### CONFERENCE ROOM CAPACITIES

Venue	Sq.M	Theatre	Classroom	Cocktail	Banquet	Boardroom	U-Shape
Conference Centre	592	500	245	800	350	-----	-----
Chancellor 1 (Conf Centre 1)	324	300	160	300	200	-----	60
Chancellor 2 (Conf Centre 2)	243	200	120	180	100	-----	-----
Conf Centre Pre-function Area	308			200			
Chancellor Ballroom Chancellor 3, 4 & 5	268.8	320	160	300	180 No AV	60	50
Chancellor 3	98.4	80	32	80	50	30	24
Chancellor 4	72	60	20	60	40	20	14
Chancellor 5	98.4	80	32	80	50	30	24
Chancellor 3 & 4	168	140	78	160	120	48	40
Chancellor 4 & 5	168	140	78	160	120	48	40
Chancellor 6	90	70	32	70	50	24	24
Chancellor 7	48	-----	-----	20	12	12	-----
Chancellor 8	48	-----	-----	14	14	14	-----
The Albert Hall Great Hall	834	1000	-----	1000	500 (inc dancefloor)	-----	-----
Balcony		150	-----	-----	-----	-----	-----
Tamar Valley Centre	110	90	-----	90	60	24	24
John Duncan Room	105	90	-----	90	60	28	28
City Park Café		-----	-----	50	35	-----	-----



# HOTEL GRAND CHANCELLOR

LAUNCESTON

**Hotel Grand Chancellor Launceston**  
*Incorporating the Albert Hall*

29 Cameron Street  
PO Box 2147  
Launceston Tasmania Australia 7250

Phone: +61 (3) 6334 3434

Facsimile: +61 (3) 6331 7347

[conferencing@hgclaunceston.com.au](mailto:conferencing@hgclaunceston.com.au)

[www.ghihotels.com](http://www.ghihotels.com)



## The Albert Hall

